

## First State Bank of Livingston

First State Bank's ASSESSMENT AREA includes all of Polk County, San Jacinto County, Tyler County and Jasper County.

The GEOGRAPHIES within **Polk County** are the following Census Tracts:

2101.03	2102.03	2103.01	2104.01	2105.00
2101.04	2102.04	2103.02	2104.02	
2101.05	2102.05			
2101.06	2102.06			

The GEOGRAPHIES within **San Jacinto County** are the following Census Tracts:

2001.03	2002.01	2003.01
2001.04	2002.02	2003.02
2001.05		
2001.06		
2001.07		

The GEOGRAPHIES within **Jasper County** are the following Census Tracts:

9501.01	9503	9506	9508
9501.02	9504	9507.01	
9502	9505	9507.02	

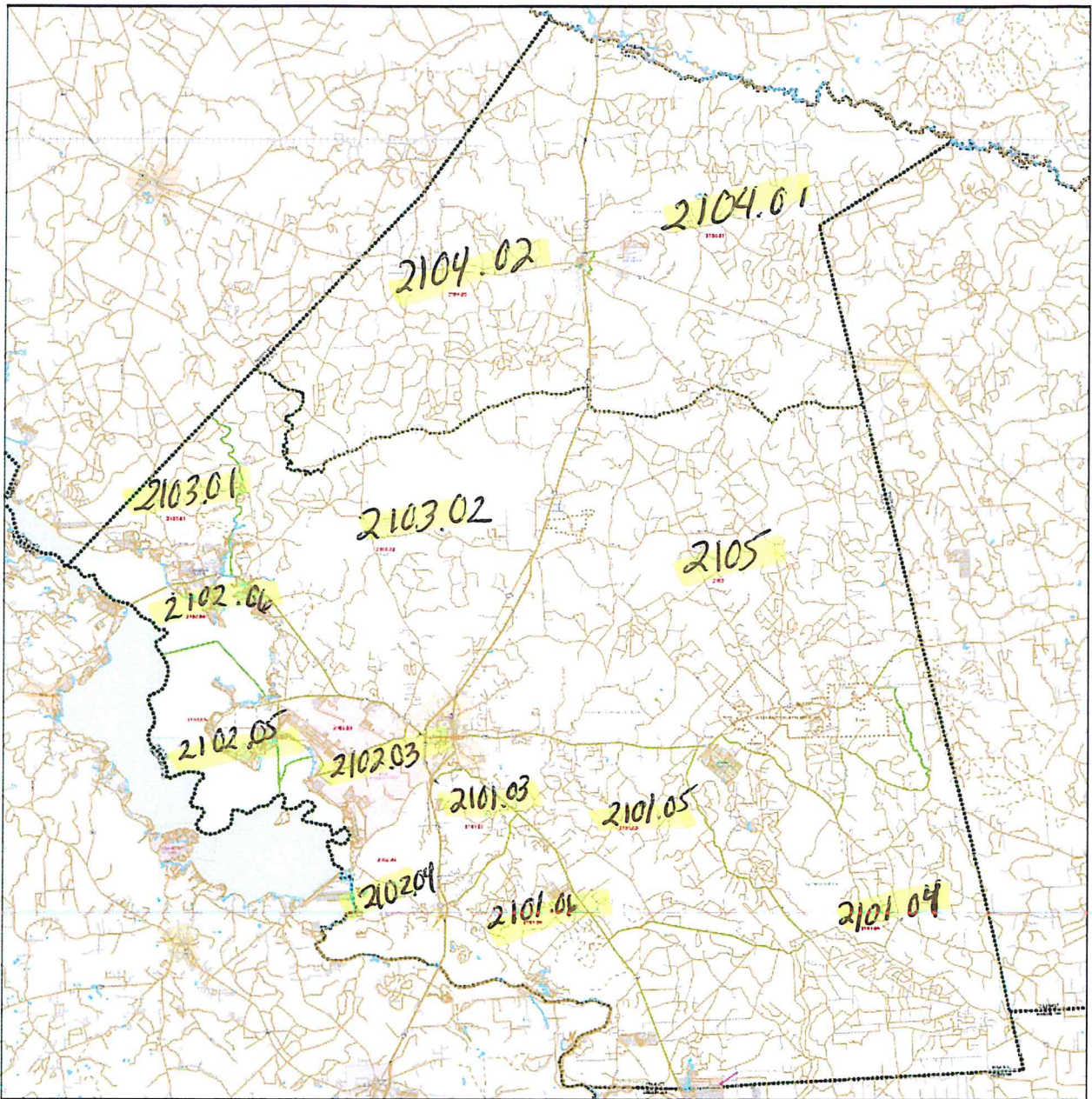
The GEOGRAPHIES within **Tyler County** are the following Census Tracts:

9501	9502.01	9503	9505
	9502.02	9504	

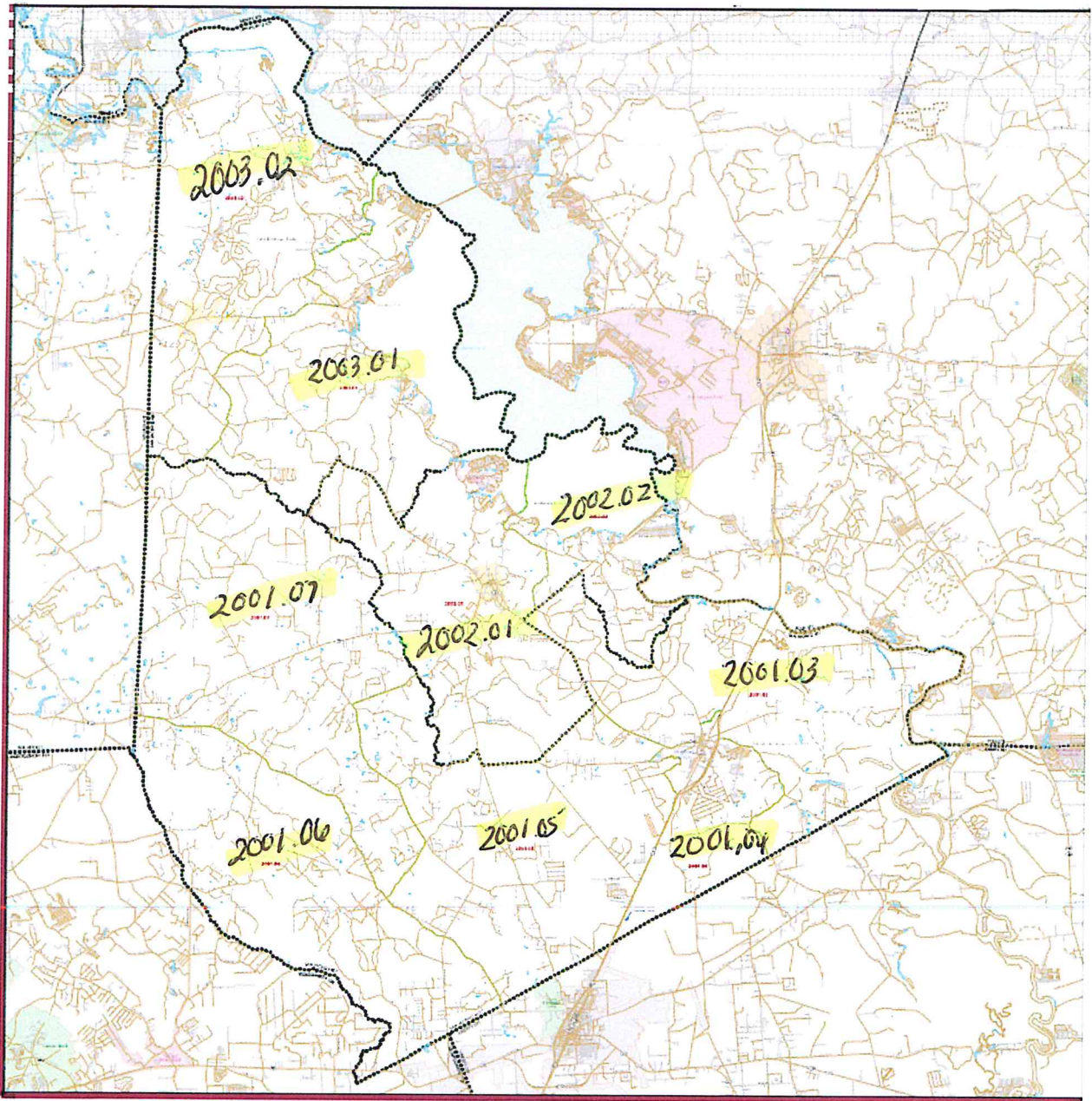
San Jacinto County was included in the Houston-Sugarland-Baytown, Texas MSA 26420 in 2004. In 2014 San Jacinto was not a MSA. In January of 2024 San Jacinto became a MSA.

Polk County, Jasper County and Tyler County are not part of a designated MSA.

08/16/2024



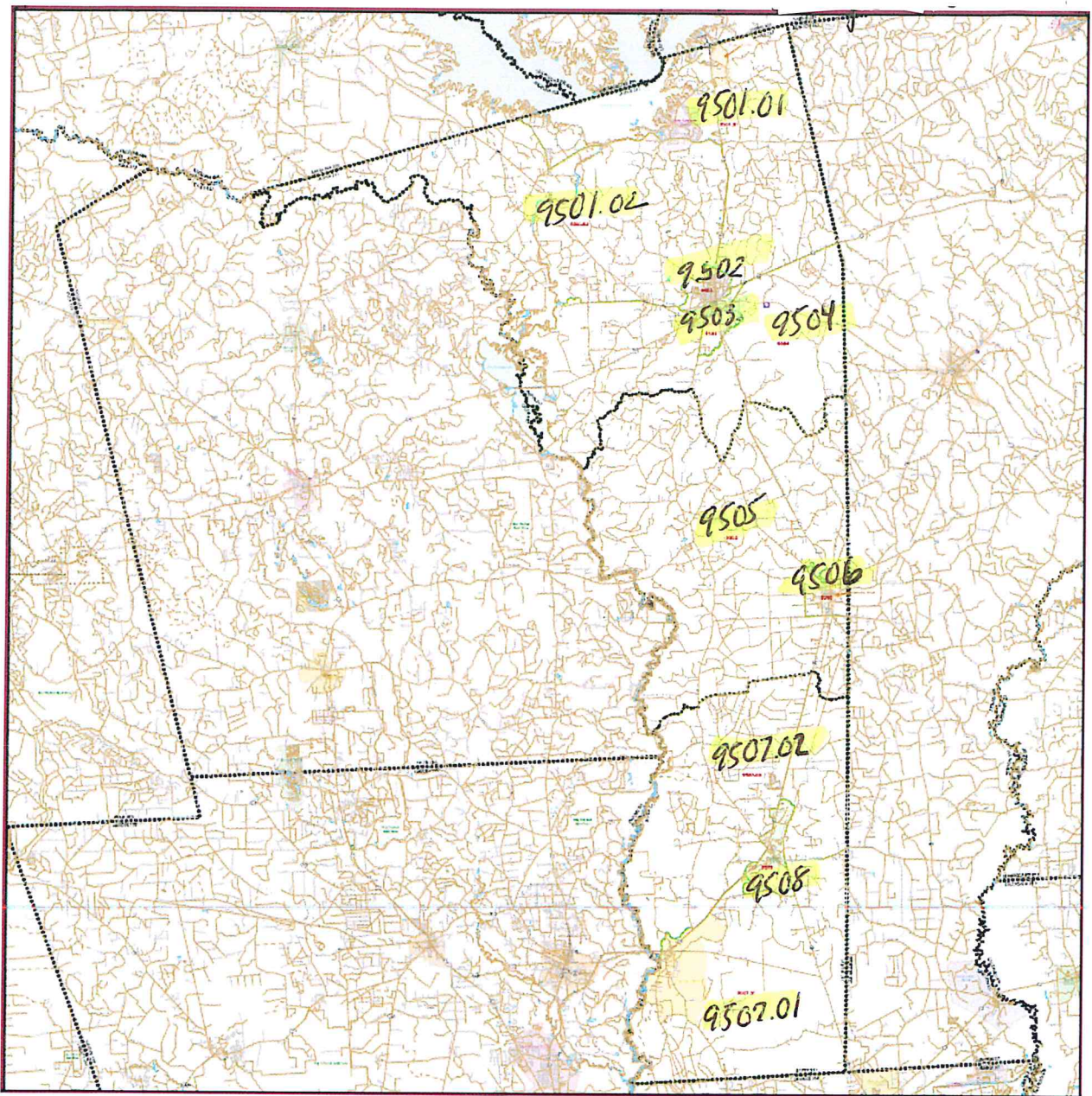
8/16/2024 Polk County 2020 Census Tract Reference Map



8/16/24

San Jacinto  
County

2020 Census Tract  
Reference Map

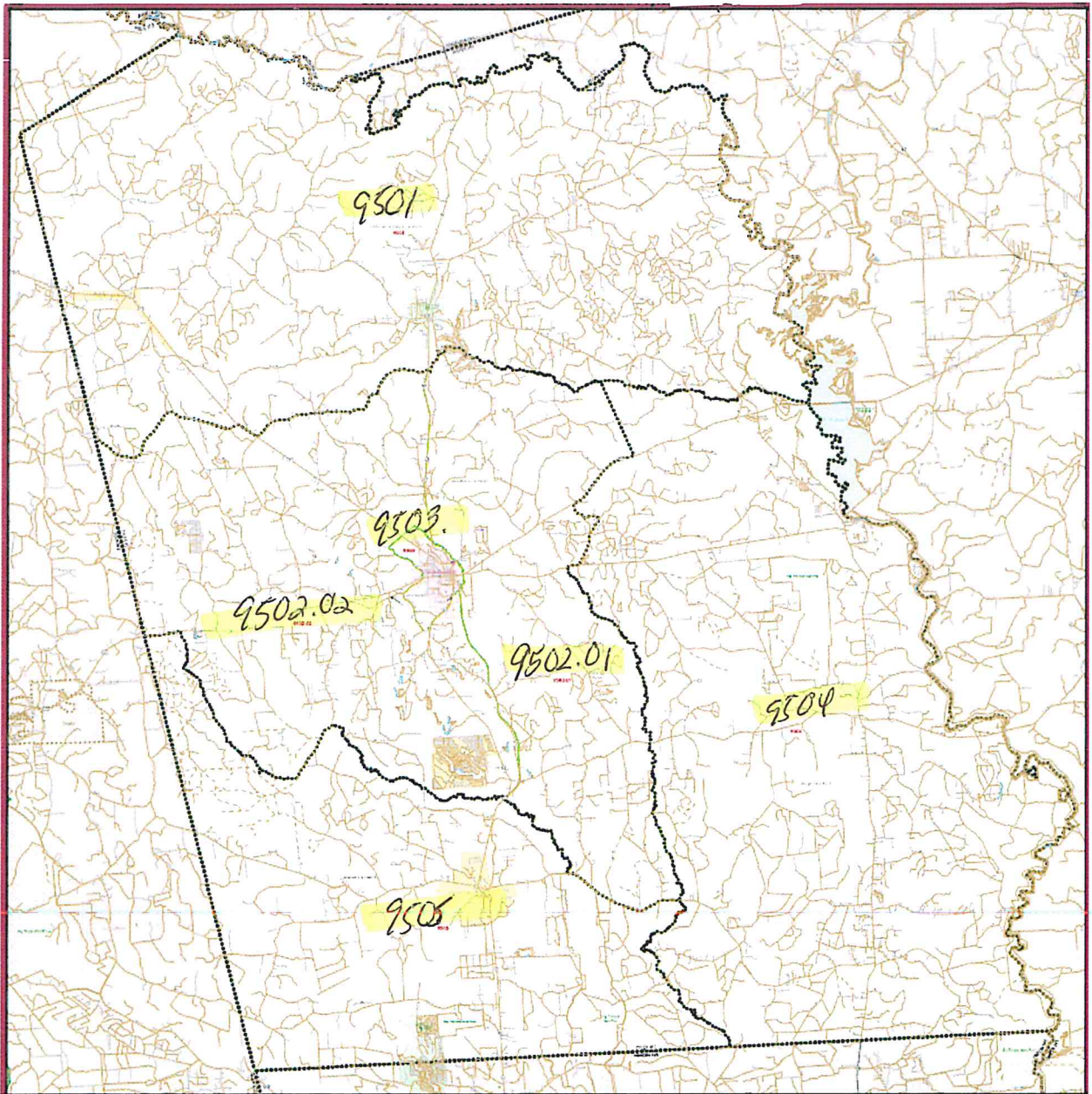


8/16/24

Jasper  
County

2020

Census Tract  
Reference Map



8/16/24

Tyler  
County

2020 Census Tract  
Reference Map